



*Kei te whakatakataka a matou akonga mo nga ahei a tona wa  
Preparing our students for the possibilities of tomorrow*

Phone: 07 3666 814

Email: [office@lakerere.school.nz](mailto:office@lakerere.school.nz)

Website: [www.lakerere.school.nz](http://www.lakerere.school.nz)



Bus Changes : 07 3666 814 (leave a msg)

Absentees: SKOOL LOOP or 07 3666 814

Dental unit: 0800 525 378

## 17th August 2023

### Week 5

#### Principal Report

You will have seen that the Government has announced the removal of the mandatory COVID isolation rule, which took effect on 15 August 2023.

#### All COVID-19 requirements removed – Unite against COVID-19

Public health officials have advised risk from COVID-19 is now considered low compared to other stages of the pandemic and it is safe to remove the final requirements.

This winter we are seeing a rise in seasonal colds, flu and other respiratory illnesses circulating within our communities, and our early learning services, kura and schools. To protect our staff and the children in our care from the spread of respiratory infections this winter, and recognising COVID-19 is still circulating, it is important that we follow these infection prevention measures and that we support our staff and the people who enter our facilities to do the same. The more layers of protection we put in place – such as staying home if sick, washing your hands, vaccination, mask wearing and ventilation – the harder it will be for infection to spread.

Guidance on winter illness and children's attendance at early learning services, kura and schools: Healthy young children can have up to 8 to 12 colds or upper respiratory tract infections each year and these are a normal part of childhood. With a rise in seasonal colds, flu and other respiratory infections already occurring in our communities, use this guidance to assist with decisions about children's attendance at early learning services and schools when they are, or have been unwell:

- A child should stay at home if they appear unwell or they develop one or more of these symptoms: new onset of a runny nose, sore throat, cough, fever, vomiting, diarrhoea, rash, they are off their food and drink or show signs of feeling miserable.

- If a child becomes increasingly unwell and/or you are concerned about their health, call your GP or Healthline on 0800 611 116 for medical advice. A child who is refusing to drink anything is likely to be very unwell.

- If an in-person appointment is required for a child, follow your GP's processes which will include having everyone who can practically and safely wear a mask to put one on.

- If you or a child you are caring for develops difficulty breathing, severe chest pain, fainting or becomes unconscious, call 111 immediately.

- For accurate and reliable information on how to manage colds and flus visit KidsHealth and Health Navigator.

Stay healthy

#### Learning Pit/Learning Ladder

As a staff we have been doing a lot of work towards ensuring our students know what they are learning, how they are learning, why they are learning and why they are learning.

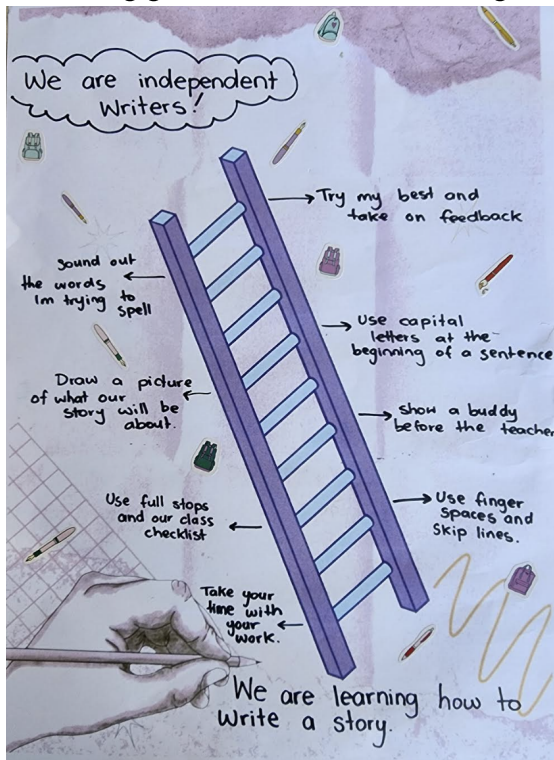


#### How it works.

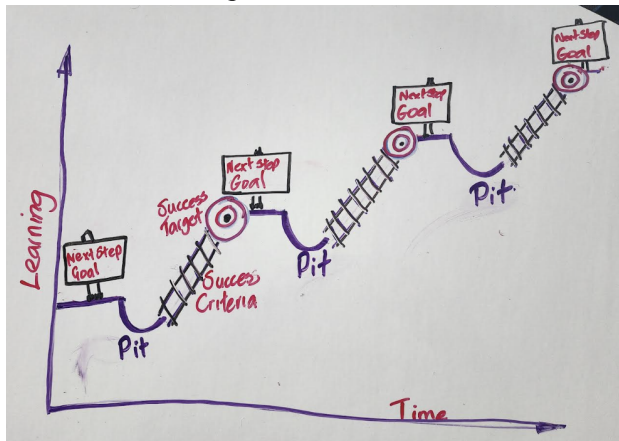
The Learning Pit is a tool that clarifies to students that in order to experience deep learning, it will be difficult and it is okay to struggle. It is a picture that gives students a visual of how learning happens.

The Learning Ladder helps us climb out of the pit and represents the success criteria. Success criteria are linked to learning goals. They are developed by the teacher and/or the student and describe what success looks like. They help the teacher and student to make judgements about the quality of student learning and what is needed to achieve their success target. This is a continual process and the diagrams below indicate how learning goals support children's learning improves over time.

## Individual Learning Ladder (showing goals- success criteria- target)



Progress over time



## Reporoa Valley Cluster Cultural Festival Programme

A letter went home with students earlier this week. All welcome to attend. Friday 18 August 2023. Timetable as below.

Rangatira o ngā kawa - Hinehau Treanor

8.45am Whakatau - Karakia - Reporoa College Hall

9.20am – 10.45am

1. Reporoa Kindergarten
2. Reporoa Playcentre
3. Reporoa Primary School - Years 0 - 3
4. Mihi School - Years 1 - 6
5. Broadlands School - Years 1 - 3
6. Waikite Valley School - Years 1 - 3

10.45am – 11.10am - Paramanawa (morning tea)

11.10am – 1.00pm

7. Lake Rerewhakaaitu School - Years 1 - 8
8. Reporoa Primary School - Years 3 - 6
9. Broadlands School - Years 4 - 6
10. Waikite Valley School - Years 4 - 8
11. Ngā Taura Here o te Kura o Reporoa
12. Te Kapa o ngā tamariki Toronga o te Kura o

Broadlands

13. Ngā Aka Hohoro

1.00pm - Poroporoaki

## Pet Day Trophies

🏆 Please return all of those lovely, shiny Pet Day Trophies to the school office. 🏆

## Dental Van

Yay! We have had confirmation that the Dental Van will be here in the first week of Term 4. When they are here, they will apply the fluoride protection (instead of the previous scheduled date of 22nd August).

In the meantime, parents are advised for any checks or teeth concerns to contact the Dental team directly on 0800 525 378 or email [teeth@lakesdhb.govt.nz](mailto:teeth@lakesdhb.govt.nz)



## Shave for a Cure Fundraiser

We are completely blown away by the generosity and love that has been shown to the school throughout the time we have been fundraising for Shave for a Cure. We fundraised a total of **\$1000.10!** This was through community donations, the bake sale, therefor hitting our fun milestones which were:

- ★ \$50 - 😊 Throw a pie at Miss Harris and Mrs Trumper (1 student rep per class)
- ★ \$75 - 🧔 Rick shaving off his luscious beard
- ★ \$100 - Miss Gow dyeing her hair hot pink
- ★ \$150 - 🧔 Mrs Anna, Halie Mclean and Ian Dobson shaving their heads.
- ★ \$400 - Miss Harris and Mrs Trumper jumping in the school pool (Polar grunge plunge)
- ★ \$1000 - The teachers will put on a star performance on Friday 25th August.

Thank you to our wonderful community, students, PTA and staff for contributing, donating and going the extra mile for our Shave for a Cure. Especially to Ian Dobson, Halie Mclean, Anna McMillan and Rick Whalley for shaving your heads (and beard) in support of those who have faced Leukaemia and blood cancers. See some photos on the last page. 📸

## PTA Meetings

Would you like to come and see what we're up to and join our amazing crew? We would love to see you at our next PTA meetings.

All are welcome.

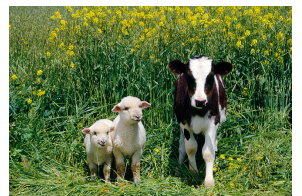
- 22nd August 7.00pm
- 6th September 6.30pm

Meetings are held in the staffroom.



## Pet Day - Saturday 14th October

Have you returned your show of interest form? If not, please return it to school as soon as possible. This allows our amazing PTA to have an idea on how many animals and families we expect to cater for.



Our school Pet Day will be held on Saturday 14th October and Group Day on Friday 20th October - Mamaku School hosting, venue TBC. Lambs and Calves animals need to be born between 20th July and 1st September. More information will follow in due course. If your child is interested in raising a lamb or calf, please check out the booklets on our website, under Communications > Publications.



## Dates to Remember

Fri 18 Aug	Cultural Festival
Tue 22 Aug	Puberty Talks PTA Meeting 7pm
4 - 8 Sep	Scholastic Book Fair week
Tue 5 Sep	Board Meeting 7pm
Wed 6 Sep	PTA Meeting 6.30pm
Thu 14 Sep	Cluster Winter Sports
Fri 15 Sep	Cluster Speeches
Thu 21 Sep	Last school day
Fri 22 Sep	Term 3 Ends / Teacher Only Day
Mon 9 Oct	Term 4 Starts
Sat 14 Oct	LRS Pet Day
Tue 17 Oct	Board Meeting 7pm
Fri 20 Oct	Group Day

## TERRIFIC TUPU

### Breakfast

Our tamariki have still been enjoying having weetbix for breakfast when they come to school. Even if they have already had something to eat at home, it's a nice way to catch up in the morning with friends and settle in for the day. Thank you to Fonterra and Weetbix for supporting our school in this way.



### Science field trip

On Monday our school went to Reporoa College to see the Science Roadshow, it was very exciting for our students! They taught us about sound waves, blew things up and lit things on fire. So you know Tupu class really enjoyed it!



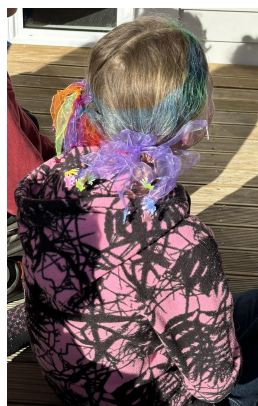
## MAHURI

Kia ora,

Yet another busy week!  
On Monday we travelled to Reporoa College for the travelling Science Roadshow. We had a BLAST watching the scientists put on a show about soundwaves, explosions and solvents before we got to go play and use all the hands-on experiences that had been set up for us.



We started using the BSLA, a structured literacy approach for reading this week. The children will have the same reading book for multiple days as we complete all the lessons around sounds, decoding and spelling rules. Your children are more than welcome to read a book of their choosing from their book box or from home for homework.



## RAKAU

Where do cows go on Friday nights?  
They go to the moo-vies!

Rakau has had another outstanding week of learning. We really enjoyed Kimiora from Sports Bay of Plenty coming in and teaching us some new games last week. We focused on moving our whole body and concentrating on objects at the same time. We are super excited for Kapa Haka on Friday, we have been working really hard and are ready to perform.

Ng ā mihi, Rakau Class







Dr. Seuss's  
**THE CAT  
IN THE HAT**

**LIVE ON STAGE!**

**ROTORUA**  
September 23  
Sir Owen Glenn  
Theatre

[www.ticketmaster.co.nz](http://www.ticketmaster.co.nz)  
[www.catinthehatlive.com](http://www.catinthehatlive.com)

**Q QUANTUM**  
glass & tinting

30+ years experience in the Glazing industry

At Quantum Glass and Tinting we specialize in tinting on Residential & Commercial Properties. Servicing Rotorua, and the Rotorua districts, rural areas including Galatea, Murupara, Rerewhakaaitu, Reporoa, Waikite & Atiamuri.

- Industry Leading Materials ✓
- Fair Pricing ✓
- Workmanship Guaranteed ✓

... and if I can't do it, I'll help you find someone that can.

IAN PHILPOT  
027 353 7579

[WWW.QUANTUMGLASSANDTINTING.CO.NZ](http://WWW.QUANTUMGLASSANDTINTING.CO.NZ)

**Help your community vote.**

Register to work at the 2023 General Election.

**ELECTORAL COMMISSION**

We need people with different skills and backgrounds all across Aotearoa New Zealand. For more information about the roles, and to register your interest, visit [work.elections.nz](http://work.elections.nz)

**work.elections.nz**

Get paid to bring your skills to the 2023 General Election. If you would like to work at a Voting Place, please contact:

Megan Hohepa  
021 2412757  
[megan.hohepa@elections.govt.nz](mailto:megan.hohepa@elections.govt.nz)