



ABSENTEES: SKOOL LOOP OR 07 3666 814 / BUS CHANGES: 07 3666 814 (LEAVE A MSG) / DENTAL UNIT: 0800 525 378

Principal Report

Kia ora e te whānau,

Kapahaka performance tomorrow!

Just a friendly reminder that we will be performing our Kapahaka at Reporoa College tomorrow, Friday, August 22nd. The bus will be leaving our school at 10am. and we'll be heading back at 1pm. Students will have lunch when they return to school. A quick note on uniform: Please ensure girls' hair is in a bun if possible. Don't worry if you can't do it at home—we can help fix it at school. A huge thank you to Miss Gow for coming back and helping us polish our performance! Your guidance and support have been invaluable. We're all excited to show off our hard work. We can't wait to see our tamariki shine!



Bus Safety Reminder

Just a quick reminder to all our drivers about bus safety. We've noticed some cars speeding past our buses while they are stopped to let children on and off. Please remember that when a school bus has its red lights flashing, you must slow down to 20 km/h in both directions. This rule is in place for the safety of our children, and it's essential that everyone follows it. Thank you for helping us keep our tamariki safe.

Next Tuesday, 26th August, our new Rakau teacher, Whaea Julieanne will be coming to spend the day meeting our akonga and seeing how our school runs.

Our wonderful Reporoa Health nurse will be coming to facilitate [Puberty talks on Thursday 4th September](#) for our Year 6 - 8 students. Letters will be coming home to those students. If you are a parent of a Year 4 or 5 student, who you feel these talks would be valuable for, please let us know, so we can include them.

Congratulations to the students who showed grit and determination, while representing our amazing wee school, at the Tough Guy & Gal this week! Well done! Thanks to the parents for supporting them, and also sending in some pics to share with our school community :-)



Reminder to return your responses for the [Community Consultation Health and Physical Education Curriculum 2025 -2027](#). Send back to school by this coming **Monday 25 August 2025**.

Attendance

Attendance - Our 2025 Target is: To improve attendance and engagement to 75% of students attending 90% or higher.

We are currently sitting at 68% of students at 90% attendance or above. Last weeks absentees:

Rakau 88.9% attendance

Mahuri 92.8% attendance

Tupu 88.5% attendance

Excellent effort to those students and their whanau for ensuring your tamariki are attending school each day.



MAHURI!

In the first week of September we will be having our annual Scholastic Book Fair. During this week we will have a Dress up as your favourite book character day. Who will you be?!

PTA
CORNER

Order forms are going home today for our PTA Calendar Art fundraiser. Artwork and samples will be displayed in the office until the 18th September. Come and check them out.

Orders and payments to be in by Thursday 18th September.



07 3666 814

office@lakerere.school.nz

www.lakerere.school.nz

Office Hours

Monday: 9.00am - 3.00pm

Tuesday: 9.00am - 3.00pm

Thursday: 9.00am - 12.30pm

Friday: 9.00am - 3.00pm

Important dates

August

Wed 27 PTA Meeting

September

2 - 5 Scholastic Book Fair

Thu 4 Puberty Talks

Fri 5 LRS Speeches

Tue 9 Cluster Speeches

Wed 10 Board Meeting 7pm

Wed 17 Cluster Winter Sports

Fri 19 Term 3 Ends

October

Mon 6 Term 4 Starts

Sat 11 Pet Day

Fri 24 Group Day @ Reporoa

Mon 27 Labour Day STAT

Tue 28 Kahui Ako TOD

November

Fri 7 LRS Athletics

Thu 20 Cluster Athletics

Parent help required

Cluster Winter Sports
LRS & Cluster Athletics

Kei te whakatakataka a matou
akonga mo nga ahei a tona wa
Preparing our students for the
possibilities of tomorrow

Kia ora, koutou,

This week we are delving deeper into the elements of a narrative story. As well as retelling the events in our story of the week, we have been learning to identify the characters and setting in the story. We learned that the main character is introduced at the beginning of the story. This week's story was about a boy named Norvin who looked like a shark. What was it about Norvin that made him look like a shark? Ask your child to tell you about Norvin and what happened to him.

Kia pai tō rā,
Tupu class.

TUPU

CLASS

Snippets

Kia ora anō e te whānau,

MAHURI

This week in class, we've been exploring how the different phases of the moon can guide our actions in the māra (garden). The students have been learning that traditional maramataka (Māori lunar calendar) knowledge can help determine the best times for planting, harvesting, and caring for the soil. Each phase of the moon influences the energy in the environment, and we've been discovering how mātauranga Māori can support a deeper connection with nature and sustainable gardening practices. We've had some fantastic discussions and observations, and the tamariki are enjoying becoming more attuned to the rhythms of the natural world.

Ka kite koutou,
Whaea Kylie

Pet Day is Coming! 🐶🐱🐹

It's that exciting time of year again—Pet Day is just around the corner! Children are already buzzing with enthusiasm as they prepare to choose and raise their special pets.



Our School Pet Day:

Saturday, 11th October

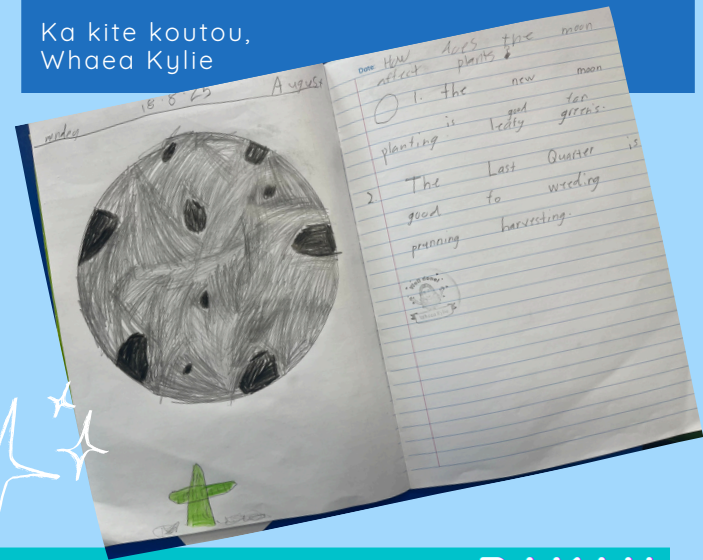
Group Day:

Friday, 24th October @ Reporoa Primary

For those interested in raising a lamb or calf, please note that these animals must be born between 20th July and 25th September 2025 to be eligible.

To help your child get started, check out the helpful Rearing Booklets available on our website:

<https://www.lakerere.school.nz/publications>



RAKAU

Kia ora e te whānau,

This week in Rakau, we've been busy with some exciting learning! In Maths, we've been tackling multiplication with regrouping, and the students are doing a great job of mastering this tricky skill. For Literacy, we've been focused on several key areas. The students have been learning to write and deliver speeches, which is a fantastic way to build their confidence and public speaking skills. In Spelling, we've been working on words with -ing endings, -ir sounds, and learning how to form plurals using -ves. Our Reading sessions have been all about inferencing, helping students to read between the lines and understand what an author is suggesting.

Our Kapa haka group has been putting in their final practices for their performance this Friday. They've worked incredibly hard and are excited to show you what they've learned.

You are warmly invited to come and watch them perform at Reporoa College. Our performance is at 11:15 am, but there will be other schools performing throughout the day.

We hope to see you there to support our amazing tamariki!

Ngā mihi nui,
The Rakau Team



Have your child's own art made into unique products!

Calendars

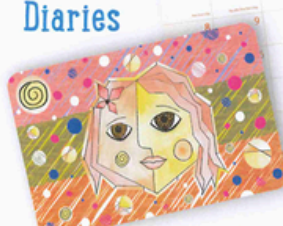


- ★ Treasured keepsakes
- ★ Perfect Christmas presents for friends and family
- ★ Order as many items as you wish from the same picture

Cards



Diaries



Mouse Mats

Sketch Pads

\$ 18 Per Calendar \$ 18 Per Pack of 8 Cards

\$ 20 Per Diary \$ 20 Per Mouse Mat

\$ 20 Per Sketch Pad

CONGRATULATIONS



LAST WEEKS CERTIFICATES WENT TO:

Regan for independence in writing, Mana for great work in reading: knowing letter sounds and blending sounds in words. Eleanor for showing consistent kindness and respect to your Mahuri classmates. Ted for setting ambitious goals and working steadily towards them. Te Kaia for great work on his speech.

KEEP IT
UP!

Principals award



Flynn for Whanaungatanga

Caught being Awesome

"Caught Being Awesome" awards are given out to students of Lake Rerewhakaaitu School at playtime. Students can earn them by following our school values, being a good friend and following the school rules. These awards then go into either the senior or junior bucket, then at Fridays assemblies all get read out and one from each drawn out as our super star recipient. Our Caught Being Awesome recipients are...

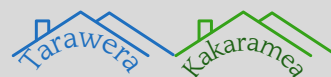


Te Ngahere & Te Kaia

A WARM WELCOME

A warm welcome to
Alistair & Reena
who are new to our school,
We wish you both a wonderful
new journey here at Lake
Rerewhakaaitu School

HOUSE POINTS



Each week we give out a house cup to the house that's in the lead. Students can earn house points by following our school rules, values, being on task and even when they get caught being awesome.

House Captains are;

Tarawera - Chase & Jonty

Kakarama - Ryan & Taituha

Congratulations to our house winner for last week...

REPOROA VALLEY CULTURAL FESTIVAL

Programme

2025

Friday 22 August 2025

Rangitira o nga kawa - Whaea Felicity

9:00am - Whakatau - Karakia - Reporoa College Hall

9:15am - 10:45am

1. Reporoa Playcentre
2. Mihi School - Years 1 - 6
3. Reporoa Primary School - Years 0-4
4. Broadlands School - Years 1 - 3
5. Waikite Valley School - Years 1 - 3

10:45am - 11:10am - Paramanawa (morning tea)

11:15am - 1:00pm

6. Lake Rerewhakaaitu School - Years 1 - 8
7. Reporoa Primary School - Years 4 - 6
8. Broadlands School - Years 4 - 6
9. Waikite Valley School - Years 4 - 8
10. Te Kapa o nga tamariki Toronga o te Kura o Broadlands

1:00pm - Poroporoaki

Mihi School will be providing a BBQ (sausage, bread & sauce) \$2.00

STAY IN THE LOOP IN ALL CONDITIONS This Winter

With our Skool Loop app!

Download today to keep up to date with school information. Notices, newsletters, absentee notifications and much more.



Simple free download

Scan the QR code or In Google play & App Store search 'Skool Loop' & choose our school once installed.





Onuku Maori Lands Trust Pet Lambs

Onuku Maori Lands Trust are offering the opportunity to rear newborn lambs over an 8-week period.

Their team will:

- Provide newborn lambs (a few days old) for students to rear;
- Supply one bag of lamb milk replacer per lamb;
- Deliver an educational session on animal care, feeding schedules, and welfare;
- Share easy-to-follow support materials (booklets and online resources);
- Offer a \$30 reward per lamb returned at $\geq 17\text{kg}$ after the programme;
- Present certificates to participating students and support our Pet Day.

We are happy for the whanau to keep the lamb if they purchase the powder to rear themselves or reimburse us for the powder cost.

Onuku Maori Lands Trust are willing to provide as many lambs as you want and if families wish to rear a number of lambs and then they can donate the funds to the school.

Please let us know ASAP if you are interested in this, and how many lambs you would like to rear.

Contact:

Email: office@lakerere.school.nz or

Phone 07 3666 814



Calling all Farmers! 4 DAY OLD CALF SALE FUNDRAISER



LAKE REREWHAKAITU SCHOOL PTA
ARE ASKING FOR DONATIONS OF 4 DAY OLD
CALVES TO RAISE FUNDS FOR OUR HOME
ECONOMICS ROOM

Donations of Friesian Bulls (5 white
points) or Hereford White Face Bulls

Must be NAIT tagged & have TB docket

PLEASE CALL **SAMMIE 021 060 7948**
IF YOU ARE ABLE TO HELP OR
FOR MORE INFORMATION

SALE DATES

THURSDAY 14TH AUGUST &

THURSDAY 4TH SEPTEMBER 2025

CALL SAMMIE TO ARRANGE PICK UP



ISSUE 6
CLOSING
SOON!

\$5 Earn a
PROMO CODE



VOLTRIGHT LTD

ELECTRICAL SPECIALISTS - INDUSTRIAL - COMMERCIAL - RURAL

ELECTRICAL SERVICES

A team based rurally in Rerewhakaaitu



- ⚡ All electrical maintenance & repairs
- ⚡ New Installations
- ⚡ Solar systems
- ⚡ Electrical Safety Inspection services
- ⚡ Control system automation
- ⚡ Heat Pump Installation
- ⚡ 24/7 Breakdown Service
- ⚡ No Local KM's charged

CALL MARTY 021 337962

Locals supporting Locals

Support
LOCAL

Q QUANTUM

glass & tinting

30+ years experience in the Glazing industry

At Quantum Glass and Tinting we specialize in tinting
on Residential & Commercial Properties. Servicing
Rotorua, and the Rotorua districts, rural areas
including Galatea, Murupara, Rerewhakaaitu, Reporoa,
Waikite & Atiamuri.

- Industry Leading Materials ✓
- Fair Pricing ✓
- Workmanship Guaranteed ✓

... and if I can't do it, I'll help you find someone that
can.

IAN PHILPOT
027 353 7579

WWW.QUANTUMGLASSANDTINTING.CO.NZ