



ABSENTEES: SKOOL LOOP OR 07 3666 814 / BUS CHANGES: 07 3666 814 (LEAVE A MSG) / DENTAL UNIT: 0800 525 378

Principal Report

Term 1 2026
Week 7

Pai tū pai hinga nāwai rā ka oti

Good to stand, good to fall, continue on and eventually the work is completed

As we complete our assessment recording for the term, it has been a valuable time to reflect on the learning and progress made across the kura.

This term, we have focused on building resilience, supporting positive behaviour, and strengthening student agency. These areas will continue to be a key focus as we move into next term.

Looking ahead, I'd like to introduce the concept of growth mindset — the idea that abilities and intelligence can be developed through effort, practice, and persistence, rather than being fixed. Supporting tamariki to develop this way of thinking helps them to approach challenges with confidence, learn from mistakes, and keep trying when learning feels difficult. This can be explored using the concept The Learning Pit, which helps taira understand that learning is not always easy, and that challenge and struggle are a normal and important part of the learning process. It encourages students to recognise when they need help, to ask for support, and to persevere.

You can support this learning at home by encouraging effort, praising progress, and talking positively about learning from mistakes. I look forward to continuing to build whānau and school relationships to work together on this important mahi next term.

GROWTH MINDSET

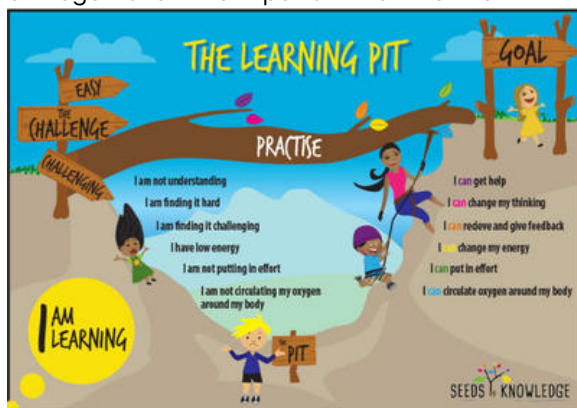
Is Freedom



@BigLifeJournal

FIXED MINDSET

Is Limiting



During our recent board meeting, we engaged in in-depth discussions about how to best provide immediate support for our student learning environment. As a result, they approved board funding to provide a teacher aide in each class for Term 2. This initiative aligns with what NZEI is actively advocating for all schools. Please check out the notice attached and on Skool Loop, and share your support for this endeavour, as it could make a significant difference for all.

Get your glad rags on and say "cheese"! A reminder that Photolife are here first thing this Monday, 30th March to take our photos.



We still have spare spaces available if there is anyone in the community who would like to join us for our St John's Refresher First aid course (no cost). Please email office@lakerere.school.nz by Thursday 2nd April if you are interested, and provide a copy of your most recent first aid certificate.

Next week the school term finishes on Thursday, so this will be our last newsletter for Term 1. We wish you all a restorative school break and look forward to seeing you all in Term 2!

07 3666 814

office@lakerere.school.nz

www.lakerere.school.nz

Office Hours

Monday: 9.00am - 3.00pm

Tuesday: 9.00am - 3.00pm

Thursday: 9.00am - 12.30pm

Friday: 9.00am - 3.00pm

Important dates

March

Mon 30 Photolife (AM)

Tue 31 PTA Meeting 7pm

April

Wed 1 Cluster Summer Sports
CBOP Swimming

Thu 2 Term 1 finishes

Fri 17 St Johns Refresher Course

Mon 20 Term 2 Starts

Tue 21 PTA Meeting 7pm

Mon 27 ANZAC Day observed

Wed 29 Board Meeting 7pm

May

Thu 14 LRS Cross Country

Tue 19 Cluster Cross Country

WE ARE HIRING!

Join us as a Teacher Aide for Term 2!



Are you passionate about making a difference in students' lives?

We are looking for an enthusiastic Fixed Term Teacher Aide to join our team, working 9.00am - 3.00pm, Monday to Friday, during term time. This exciting role involves supporting students in their learning journey and assisting with behavior or physical needs. The position is available for Term 2 only, from April 20th to July 3rd, 2026.

Please note, the selected candidate will be subject to police vetting & relevant checks.

What we're looking for:

- Experience: Prior experience as a Teacher Aide is highly valued.
- Communication: Strong oral and written communication skills are essential.
- Support: Ability to facilitate group activities and offer personalized support to students.
- Tech Savvy: Proficient computer skills and a quick learner of school applications.
- Professionalism: Discretion and professionalism in all interactions.
- Personality: An open, approachable demeanor with confidence in engaging with students and staff

If this opportunity resonates with you, we would love to hear from you!

Please submit your application, including your CV and a cover letter, to Julieanne Bull, principal@lakerere.school.nz by 3:00 PM Thursday, 2nd April, 2026

Join us in creating a supportive and dynamic learning environment!

Kei te whakatakataka a matou akonga mo nga ahei a tonua wa
Preparing our students for the possibilities of tomorrow

Kia ora, Koutou,

TUPU

We're nearing the end of our sustainability topic. Tupu students' learning has been focused around plants and garden creatures. We've learnt to look closely and describe the features of living things. We know the difference between a butterfly and a moth, we've found out about the different parts of a plant and what they're for. We've also learnt about the life cycles of plants, frogs and butterflies. Our tasks have involved colouring, cutting, sticking and labelling, and we've tried hard to improve our skills and present lovely, tidy work. A busy term and lots of learning!

Kia pai tō rā,
Tupu Class

As we wrap up the term in Mahuri class, it's wonderful to reflect on what has been an incredibly productive and rewarding eight weeks. Our learners have shown great enthusiasm for their learning while building strong relationships, resilience, and a real sense of co-operation within our classroom community.

Throughout the term, we have explored place value and measurement in mathematics, strengthening both understanding and confidence. In writing, students have worked through the full process of planning, drafting, revising, and editing, while also learning to consider their audience and choose language carefully. In reading, we have focused on building phonic awareness, developing knowledge, and strengthening decoding skills. Our inquiry learning has centred on sustainability, encouraging thoughtful discussions and a growing awareness of our role in caring for the environment. Swimming has also been a highlight in physical education, with students developing skills, confidence, and perseverance in the water. It has been fantastic to see the growth across all areas—academically, socially, and personally—and I am very proud of all that has been achieved.

Wishing you all a wonderful Easter and a relaxing April school holiday break. I look forward to seeing everyone refreshed and ready for Term Two!

Whaea Kylie.

MAHURI

CLASS Snippets

THIS TERM HAS BEEN AN INCREDIBLY PRODUCTIVE AND REWARDING TIME FOR OUR LEARNERS. WE HAVE EXPLORED A RANGE OF MEANINGFUL TOPICS AND BUILT STRONG FOUNDATIONS ACROSS SEVERAL KEY AREAS. STUDENTS DEVELOPED THEIR WRITING SKILLS BY LEARNING HOW TO CREATE CLEAR AND STRUCTURED INFORMATION REPORTS, SHOWING GROWING CONFIDENCE IN SHARING KNOWLEDGE.

OUR INQUIRY INTO THE ENVIRONMENT HAS HELPED US UNDERSTAND WHAT SUPPORTS A HEALTHY PLANET AND WHAT CAN HARM IT. ALONGSIDE THIS, WE HAVE STRENGTHENED OUR MATHEMATICAL THINKING THROUGH LEARNING ABOUT DECIMAL NUMBERS AND HOW THEY APPLY IN EVERYDAY SITUATIONS. WE HAVE ALSO EXPLORED WHAT IS IMPORTANT FOR THE WELLBEING OF ANIMALS, PLANTS, AND HUMANS, WITH A STRONG FOCUS ON SUSTAINABLE PRACTICES AND RESPONSIBLE CHOICES.

IN ADDITION TO OUR CLASSROOM LEARNING, STUDENTS HAVE ENJOYED A RANGE OF CREATIVE AND HANDS-ON EXPERIENCES. WE LEARNED HOW TO MAKE BREAD, EXPLORED PAINTING, AND CREATED BOOKMARKS WHICH WE PROUDLY SHARED WITH THE REST OF THE SCHOOL. WE ALSO INVESTIGATED FOOD AND TECHNOLOGY, LEARNING ABOUT HOW SOME PROCESSED FOODS CAN IMPACT OUR HEALTH AND WHY MAKING BALANCED, INFORMED CHOICES IS IMPORTANT.

WE ARE PROUD OF HOW MUCH PROGRESS HAS BEEN MADE THIS TERM. LOOKING AHEAD, WE AIM TO CONTINUE BUILDING ON THESE IDEAS BY APPLYING THEM BOTH IN THE CLASSROOM AND IN OUR DAILY LIVES. BY MAKING THOUGHTFUL DECISIONS AND STAYING CURIOUS, WE WILL KEEP GROWING OUR UNDERSTANDING AND MAKING A POSITIVE IMPACT ON THE WORLD AROUND US.



Each term, two students are drawn from the Caught Being Awesome winners hat for a special treat with the principal. For Term 4 2025, congratulations went to Leon and Pheonna! To celebrate, we headed to McDonald's for lunch and a play. It was a great chance to relax, chat, and celebrate the awesome behaviour these students have shown. Well done, Leon & Pheonna!

Is the term flying by for you... but your child still hanging out for the holidays?



For many of us, the term feels like it's flying, yet for our tamariki, it often feels slower. This is because their world is filled with anticipation, effort, presence and emotions. - it all this that keeps our tamariki deeply inside each day.

If your year is flying, this can be a helpful time to pause and gently reset.

- 1 Choose one place to slow the week down**
Know that not every part of your whānau life needs changing. One calmer pocket can make a big difference. It might be one evening with no rushing, a shared walk, or eating together without devices.
- 2 Notice what your child is carrying right now**
By this point in term, effort builds. This means that friendship dynamics, learning demands, and tiredness often show up at home. What looks like irritability is often accumulated effort.
- 3 Reset your attention a little**
Even 5 fully present minutes can feel meaningful to a child and help slow your year down. A small moment of connection matters and reminds us that we don't need to keep pushing.

Autumn acts as a great reminder to look up, notice where everyone is at, and gently return to what matters most.

LITTLE HEART DAY

HEART KIDS NZ



What an incredible turnout for Little Heart Day last Friday! A heartfelt thank you to everyone for supporting this wonderful cause, which has also benefited families within our school community. We raised \$137! Your generous contributions are truly appreciated! :)

CONGRATULATIONS



LAST WEEKS CERTIFICATES WENT TO:

Kayden-Chase for great participation in reading lessons; learning to blend sounds together to read words. Riana for finding information to share with the class about how plants grow. Lucy for showing perseverance in maths.
Caoimhe for super engagement in learning.
Temple for showing extraordinarily positive change in attitude towards learning and hauora based activities. Liam for showing effort in work and other class activities.

Caught being Awesome

"Caught Being Awesome" awards are given out to students of Lake Rerewhakaaitu School at playtime. Students can earn them by following our school values, being a good friend and following the school rules. These awards then go into either the senior or junior bucket, then at Fridays assemblies all get read out and one from each drawn out as our super star recipient. Our Caught Being Awesome recipients are...

Principals award

Te Kaia for consistently showing the school value of Whanaungatanga



Loki & Koven

HOUSE POINTS



Each week we give out a house cup to the house that's in the lead. Students can earn house points by following our school rules, values, being on task and even when they get caught being awesome.
House Captains are;
Tarawera - Te Ngahere & Flynn
Kakarama - Taituha & Nikau
Congratulations to our house winner for last week...



Attendance

Attendance - Our 2025 Target is: To improve attendance and engagement to 75% of students attending 90% or higher. We are currently sitting at 74% of students at 90% attendance or above. Last weeks results:
Rakau 90% attendance
Mahuri 93% attendance
Tupu 96% attendance
We currently have 16 students with 100% attendance. Excellent effort to those students and their whanau for ensuring your tamariki are attending school each day.



TUPU!

Under 5's Playgroup

Tuesdays from 9:30am
@Rerewhakaaitu Domain

For all babies and children age 0-5 in the area
Tea and coffee for adults
Bikes, toys, and craft supplies for kids



Let's seek a new dawn in education

All tamariki in Aotearoa deserve an inclusive, engaging education which meets their needs.

However, cuts to school lunches, te reo Māori programmes, attacks on the quality of early childhood education and the scrapping of pay equity claims makes it clear this Government does not value the work of education professionals nor our children's learning.
The system is heading in the wrong direction. Educators are struggling and tamariki are being left behind.

As educators, whānau and community, we are calling on the Government to back our future. This means:

Tamariki need a teacher aide in every classroom
Fund a teacher aide in every class in Budget 2026.

Value educators fairly and ensure their work is secure
Attract – and retain – the best people to educate our tamariki, by delivering fair pay to all educators, making work secure and restoring pay equity.

Uphold te Tiriti o Waitangi in education
Protect te reo as a taonga for our tamariki by reinstating funding for te reo Māori learning for education professionals.

Defend quality early childhood education
Make early childhood education accessible, affordable, culturally appropriate and high quality for all tamariki, by retaining 100% qualified teachers and pay parity, and by improving teacher: child ratios.

Kimi haeata means seek the dawn, and we're seeking a new dawn in education. Back our future!



SIGN THE PETITION

Rotorua Lakes Council Road Safety team is holding a fabulous free, fun family event on March 29th at the Village Green.

Come along to an action-packed day showcasing the incredible work of our emergency services!
Get up close with emergency services vehicles
Win a ride to school in an emergency vehicle with the colouring competition
There will be food stalls and a gold coin donation barbecue fundraiser
Car crash scenario starts at 10am, so get there earlier if you want to catch that action!

<https://www.facebook.com/events/1255520933369030>

EMERGENCY SERVICES DAY 29th March, 10am - 1pm at the Village Green

Come along to an action-packed day showcasing the incredible work of our emergency services!

VOLTRIGHT LTD

ELECTRICAL SPECIALISTS - INDUSTRIAL - COMMERCIAL - RURAL

ELECTRICAL SERVICES

A team based rurally in Rerewhakaaitu

- ⚡ All electrical maintenance & repairs
- ⚡ New Installations
- ⚡ Solar systems
- ⚡ Electrical Safety Inspection services
- ⚡ Control system automation
- ⚡ Heat Pump Installation
- ⚡ 24/7 Breakdown Service
- ⚡ No Local KM's charged

CALL MARTY 021 337962

Locals supporting Locals

Q QUANTUM

glass & tinting

30+ years experience in the Glazing industry

At Quantum Glass and Tinting we specialize in tinting on Residential & Commercial Properties. Servicing Rotorua, and the Rotorua districts, rural areas including Galatea, Murupara, Rerewhakaaitu, Reporoa, Waikite & Atiamuri.

Industry Leading Materials ✓
Fair Pricing ✓
Workmanship Guaranteed ✓

... and if I can't do it, I'll help you find someone that can.

IAN PHILPOT
027 353 7579

WWW.QUANTUMGLASSANDTINTING.CO.NZ

ANNE SAMSON SCHOOL OF BALLET

Ruby the Tui

1PM AND 6PM
SATURDAY
28TH MARCH



ticketmaster®

SIR HOWARD MORRISON CENTRE



AG COMPLIANCE SOLUTIONS

We are

Farm Compliance Experts:

- Dairy Company paperwork
- House Inspections
- Health & Safety
- Farms Policy & Procedures
- Harmful substances testing

We do it all. Stressed?

Let's Chat.

Visit www.agcompliancesolutions.nz or ring 0274920987



Support LOCAL



Thank you to our amazing local flower lady, Mel, who delivers fresh bouquets of sunshine to our school each week.
Locals supporting locals

See Facebook for notifications on fresh flower drops in the blooming fridge...

Blooms available Mondays and Friday in the Blooming fridge @193 Brett Road
Happy to pick to order - Subject to availability
Contact Mel @udderlyblooming via Facebook / Instagram



REREWHAKAAITU

Automatic External Defibrillators

1. REREWHAKAAITU HALL
2. 803 ASH PIT RD (T & H HAMILTON)

The Automatic External Defibrillator that is situated at the Hall is locked. If you have an emergency where you need to access the machine, dial 111 and they will give you the pass code that will open the cabinet.

There is also a fully automatic defibrillator available at Trevor & Harriet Hamilton's residence 803 Ashpit Road, around the back side of Lake Rerewhakaaitu. Because this defibrillator is fully automatic no training is required simply turn on and place the pads on the patient, the device takes over.

This defibrillator is registered with St John. The Defibrillator is positioned at the front door under the porch and is in a non-coded box for quick access.



These machines can help to save lives and the St Johns statistics show why we need an AED:

1. Each year more than 2,000 New Zealanders will suffer a cardiac arrest outside of hospital
2. For 72% of cardiac arrests a bystander will perform CPR
3. People may show no warnings or prior symptoms and 12% survive to hospital discharge following a cardiac arrest
4. Use of an AED within 3-5 min of collapse can increase the chance of survival by up to 44%