



ABSENTEES: SKOOL LOOP OR 07 3666 814 / BUS CHANGES: 07 3666 814 (LEAVE A MSG) / DENTAL UNIT: 0800 525 378

# Principal Report

Term 4 2025  
Week 7

Kia ora koutou,

This has been an incredibly busy and productive week at our school, filled with a wonderful array of visitors, both familiar and new. We have welcomed several individuals who are vital to the ongoing operation and future of our school:

- Welcome Diane! We extend a very warm welcome to Diane, who will be joining us as our new Resource Teacher of Learning and Behaviour (RTLb). She is taking over from the wonderful Annie, and we look forward to working with her.
- Internet Services: We hosted a visit from Johnathon of N4L (Network for Learning), who looks after our essential internet services.
- Ministry of Education Water Review: We had L'Rey from the Ministry of Education (MOE) on site, carrying out important checks on our water and wastewater systems, and a STEM session with Rakau.
- Annual Audit: Our annual interim audit visit was completed this week by Aiman from William Buck Auditors and Carla.

We were delighted to welcome a very special international visitor, Maria, from Japan! Maria is with us just for this week as part of an educational student visit. We hope she enjoys her time with us! We also farewell Maria today. We wish her all the best in her next endeavours!

Unfortunately, the cluster athletics competition was unable to be held this week due to the horrible weather conditions. It was disappointing for all involved, but we are keeping our fingers crossed for better luck next year! Despite the weather setback, our CBOP Athletics team has been chosen! CBOP event on 3<sup>rd</sup> December at the Rotorua Stadium #2, letters will be provided to those athletes today. Please ensure forms are returned promptly. We wish them the very best of luck! Also apologies to our young 800m athletes, please see the correction from last weeks' newsletter - Athletics results 800m 1<sup>st</sup> Lucy, 2<sup>nd</sup> Monique, 3<sup>rd</sup> Paige. Well done girls!

Thanks to Halie's hard work over the last few weeks, the pool is sparkling! Woo hoo! We will have the pool open for swimming, starting this Monday, 24<sup>th</sup> November. Please put your child's togs and a towel in their bags each day. The pool will be open at lunch times as well.

You may have seen in the news recently that there is a recall of Magic Sand due to a possible contamination of asbestos. Our school had 3 small 600g sealed containers of the ANKO Magic sand in Mahuri. We have removed these from the classroom and have followed all MBIE procedures and protocols. We are awaiting the results from testing and will keep you all updated as we get more information.

MBIE advice remains clear: Stop using these products immediately, secure them and dispose them safely.

- We urge schools and early learning services who have purchased these products to stop using them immediately, secure them safely, and contact your local council for advice on where and how to dispose of the contaminated material safely.
- Where you have higher volumes of these products, you should contact a licensed asbestos assessor or removalist for immediate advice and support on your specific situation.
- At this stage, we do not have enough information to quantify the risk to people's health, which is why we are taking a precautionary approach.
- Asbestos exposure is a serious health hazard.
- People are not required to take any immediate steps to manage their health if they, or their children, have been exposed to this product. However, asbestos exposure can potentially affect your long-term health.
- We are coordinating closely with other agencies to provide updated advice to you.

WorkSafe advice for schools and early learning services

- If the sand is in a sealed container, move it to a secure location away from people.
- If individuals are currently using the sand, they should put it down and relocate to a sand-free, well-ventilated area. Instruct everyone to leave the area, block it off and make sure it is not accessible.
- Do not vacuum or sweep floors where there is sand or attempt to clean it up. Contact a licensed asbestos assessor or removalist for immediate advice and support on your specific situation. Details of Class A licensed removalists are available on the WorkSafe website.
- Do not return to the affected area until the extent of contamination is established, and after the area is remediated by an expert.
- If you have identified that the sand has been used at your school or early learning site, please notify us.
- MBIE is working with the supplier to ensure the products are tested to confirm if asbestos contamination has occurred.

Kei te whakatakataka a matou akonga mo nga ahei a tona wa  
Preparing our students for the possibilities of tomorrow

07 3666 814

office@lakerere.school.nz

www.lakerere.school.nz

## Office Hours

Monday: 9.00am - 3.00pm  
Tuesday: 9.00am - 3.00pm  
Thursday: 9.00am - 12.30pm  
Friday: 9.00am - 3.00pm

## Important dates

### December

Tue 2 CCC Childrens Collaborative Conference  
Wed 3 CBOP Athletics Board Meeting 7pm  
Tue 16 Market Day  
Thu 18 Celebration of learning 11am  
Fri 19 Term 4 ends



If you received a trophy at Pet Day or last year's Celebration of Learning prizegiving, please return these to the office as we will need to engrave them for our 2025 recipients.

## Our School News In Full Bloom



**With our Skool Loop app!**  
Download today to keep up to date with school information. Notices, newsletters, absentee notifications and much more.

### Simple free download

Scan the QR code or in Google play & App Store search 'Skool Loop' & choose our school once installed.



Kia ora, koutou,

## TUPU

We have been checking up on our learning with our termly assessment this week. It's great to see students actively using the skills they have learnt throughout the year to work on the test problems. Tupu students have worked very hard this year and their hard work is showing in their achievement results.

We have started working in our class factory to produce some nice products for our school market. We hope you're looking forward to shopping at our stall in week eleven.

We've been talking about measurement in maths and using a range of words to compare the height, length and size of different objects. Here are some of the words we've learnt: tall, short, long, big, small. We can also compare three objects at once by using the words big, bigger, biggest and small, smaller, smallest. You might like to use some of these words to describe objects at home.

Kia pai tō rā,  
Tupu Class

## CLASS Snippets



As part of our school wide inquiry topic we have had some parents come in to talk to the students about their careers.

Thank you to Katie Page, our nurse from Reporoa Health, Megan O'Dea our physiotherapist from Rotorua Physiotherapy and Jacinda Poland, our local shepherdess. The children learned about how they trained for their careers, what their jobs entail and some of the tools they need.

Tupu students had this to say about today's visit from Jacinda

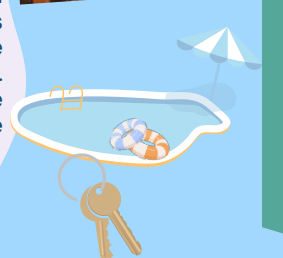
Regan - Jacinda made the dog bark from whistling.

Alastair - Jacinda made the dog bark and her dog Flipper barked too.

Keeana - The dogs name is Hui and he is inside and he is going to go outside and the person is shaving the wool off the sheep.

Lachlan - Jacinda makes the dogs run and it can go right and left and it can stop. The big fluffy dog can woof and then she went to the next room and then the dog barked again.

Please let us know if you would like to hire a pool key for access over the summer period. The pool will be open from the 20th Dec only to those who hire new keys. Key hire is \$60.00 each, which includes a \$20.00 bond refunded upon return of the key by the end of Term 1 2026. This helps to offset the cost of chemicals etc over the holiday period. Keys will be available for pick up between 12th - 17th Dec. The key is for your use only and not to be loaned out. If we do not get enough interest the pool will be closed over the summer holidays. Please advise at the office by Friday 5th Dec.



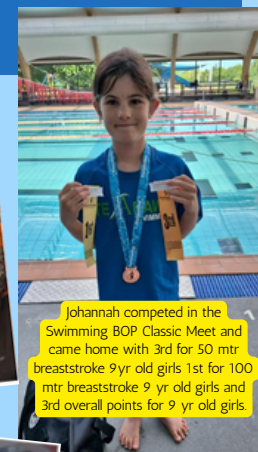
Kia ora whānau,

## MAHURI

Mahuri have been diving into how taxes work here in Aotearoa. We've been chatting about why it's important for everyone to chip in, and how the money we all pay helps fund the important services we rely on every day. The students are also learning about the different types of tax and what these mean for people earning an income.

We've been using the Banger website to support this learning as part of our local curriculum unit, "Te Whakatakataka mā Āpōpō - Preparing for the Possibilities of Tomorrow." We'll be wrapping things up with our Market Day in Week 11.

Ka kite anō,  
Whaea Kylie



Johannah competed in the Swimming BOP Classic Meet and came home with 3rd for 50 mtr breaststroke 9yr old girls 1st for 100 mtr breaststroke 9 yr old girls and 3rd overall points for 9 yr old girls.



In Rākau this week..

## RAKAU

We have had a visitor with us this week, Maria, who is visiting from Japan. We were also lucky to have a visit from L'Rey, who is a Water Engineer.

### Why is water important?

*"You can stay alive and you can grow trees to breathe"* Finn

*"It keeps everything running like plants, our food and all the animals and us"* Tai

*"It helps you stay hydrated and healthy. It will keep your whole body healthy"* Monique

*"You drink it, swim in it and wash your hands with it"* DC

### What I learned from the session with L'Rey?

*"There are five steps for being an engineer; 1. See what the problem is. 2. Think of ideas. 3. Try those ideas. 4. If it doesn't work, try again. 5. Go with it"* Maria

*"You have to check the water so that we can drink it so that we don't get sick"* Addison

*"To look at the problem, see where the problem comes from and make a plan to fix it"* Charlie

Then L'Rey set us an engineering challenge...build the biggest tower with only the resources on the table, working as a team. Thanks for sharing your passion and mahi with us, L'Rey!





**KIWI**  
— TO THE —  
**BONE**

Our school recently recieved \$562.80 from AFFCO's 2025 Bobby Calf Cash for Schools Programme!

With thanks to our amazing supporters:

LAKELAND DAIRIES LTD  
MAUNGA VIEWS LTD  
REREWHAKAAITU FARM LTD  
SKIDELZ LTD  
THE FRASER-HARRIS TRUST  
VOLCANIC FLATS LTD

LRS PTA FISHING COMPETITION  
JANUARY 2026



## Fill the Wheelbarrow Raffle

Our PTA is on the hunt for items to "fill the wheelbarrow", which will be raffled for their upcoming fundraiser - Fishing Competition.

Accepting donations of non-perishable food in jars, cans and sealed packets. We recommend sauces, soups, beans, vegetables in cans or jars, honey, peanut butter, candy, boxed juices, pasta, coconut cream and tinned fish.

Please check expiry dates on all items.



**NON PERISHABLE  
ITEMS NEEDED!**

Please drop items to the school office or contact Sammie Allen 021 060 7948 to arrange collection.



**Principals award**  
Tawhiorangi for taking care of others

### Caught being Awesome

"Caught Being Awesome" awards are given out to students of Lake Rerewhakaaitu School at playtime. Students can earn them by following our school values, being a good friend and following the school rules. These awards then go into either the senior or junior bucket, then at Fridays assemblies all get read out and one from each drawn out as our super star recipient. Our Caught Being Awesome recipients are...



Te Kaia & Leon

**CONGRATULATIONS**



### LAST WEEKS CERTIFICATES WENT TO:

Athena-Rose for always doing beautiful work. Wyatt for writing proper sentences with punctuation. Lucy for approaching all learning with a positive attitude. Renata for thinking carefully to solve your maths problems. DC for showing respect to others. Johannah for showing determination and resilience.

## HOUSE POINTS

**Tarawera** **Kakaramea**

Each week we give out a house cup to the house that's in the lead. Students can earn house points by following our school rules, values, being on task and even when they get caught being awesome.

House Captains are;

Tarawera - Chase & Jonty  
Kakaramea - Ryan & Taituha

Congratulations to our house winner for last week...

## Attendance

Attendance - Our 2025 Target is: To improve attendance and engagement to 75% of students attending 90% or higher.

We are currently sitting at 63% of students at 90% attendance or above. Last weeks results:

Rakau 87% attendance

Mahuri 96% attendance

Tupu 90% attendance

Excellent effort to those students and their whanau for ensuring your tamariki are attending school each day.

*And the Winner is...*

**MAHURI!**

Entry forms are available for our 2026 Fishing Competition being held on the 17-18th January. Get in quick as we can only accept 100 competitors. Anglers can only weigh in 2 fish. The main prize will go to the person who is closest to the average weight of all fish weighed in that section, (Adult or Child). In the event of a draw the winners name will be pulled from a hat.

Entry forms are available in the office or on our website

[https://www.lakerere.school.nz/files/Fishing\\_Competition\\_entry\\_form\\_2026.pdf](https://www.lakerere.school.nz/files/Fishing_Competition_entry_form_2026.pdf)

1st Prize Average weight: Adult \$500, Children 12-18 yr \$250, 0-11yr \$100 voucher.

Other prize categories: Longest Fish, Heaviest Fish, Longest Eel, plus spot prizes and more.

## Lake Rerewhakaaitu School PTA

Presents:

## 2026 Annual Fishing & Eeling Competition

1st Place Adults \$500 Cash Prize

1st Place Youth \$250 Cash Prize

1st Place Child \$100 Voucher

Major cash prizes proudly sponsored by

**DKH Contracting Ltd**

Entry Fee:

Adults \$25

Youth 12—18 years \$15

Child 0-11 years \$10

Date: 17th & 18th January 2026

Time: Start 6am on the 17th

Finish 3pm on the 18th

Following by Prize Giving and Dinner at the Rerewhakaaitu Domain from 5pm on the 18th.

Get in quick! Entries are limited to the first 100 entries!

For more information please visit our Facebook page or email [pta@lakerere.school.nz](mailto:pta@lakerere.school.nz)



# CHRISTMAS WORKSHOPS

Join me for some festive fun, creativity and light refreshments while creating your masterpiece

**TABLE CENTRE PIECE**  
Saturday 22nd Nov 10am - 12pm  
Sunday 30th Nov 2pm - 4pm



**CHRISTMAS WREATH**  
Saturday 22nd November 2pm - 4pm  
Sunday 30th November 10am - 12pm

**REGISTER NOW! \$45**

For more information  
Ronel: 021 0273 5317 | hillsidebloomstoroua@gmail.com

## VOLTRIGHT LTD

ELECTRICAL SPECIALISTS - INDUSTRIAL - COMMERCIAL - RURAL

### ELECTRICAL SERVICES

*A team based rurally in Rerewhakaaitu*

- ⚡ All electrical maintenance & repairs
- ⚡ New Installations
- ⚡ Solar systems
- ⚡ Electrical Safety Inspection services
- ⚡ Control system automation
- ⚡ Heat Pump Installation
- ⚡ 24/7 Breakdown Service
- ⚡ No Local KM's charged

**CALL MARTY 021 337962**

*Locals supporting Locals*



30+ years experience in the Glazing industry

At Quantum Glass and Tinting we specialize in tinting on Residential & Commercial Properties. Servicing Rotorua, and the Rotorua districts, rural areas including Galatea, Murupara, Rerewhakaaitu, Reporoa, Waikite & Atiamuri.

- Industry Leading Materials ✓
- Fair Pricing ✓
- Workmanship Guaranteed ✓

... and if I can't do it, I'll help you find someone that can.

IAN PHILPOT  
027 353 7579

WWW.QUANTUMGLASSANDTINTING.CO.NZ

Support

LOCAL

Plunket Rotorua

## The Invisible Backpack Christmas Edition

A Donna Stichbury workshop

**Thursday 27th November 2025**

**6.30-8.30pm tickets \$20**

**Hosted by Plunket Rotorua**

**Plunket House 1436 Pukuatua St**

**Understanding stress and attachment**

Book credit card:

<https://DonnaStichbury-TheRelationshipfacilitator.as.me/plunket>  
or for bank account number

[donna@therelationshipfacilitator.com](mailto:donna@therelationshipfacilitator.com)

or pay at the door

This workshop uncovers the hidden stress running the show beneath your daily life and gives you the tools to break the cycle.

It's interactive, practical, and rooted in deep self-awareness. You'll leave feeling clearer, lighter, and more in control of your inner world.

Hear reviews



**HAPPY WEEKEND**

## REREWHAKAAITU

### Automatic External Defibrillators

- 1. REREWHAKAAITU HALL**
- 2. 803 ASHPIT RD (T & H HAMILTON)**

The Automatic External Defibrillator that is situated at the Hall is locked. If you have an emergency where you need to access the machine, dial 111 and they will give you the pass code that will open the cabinet.

There is also a fully automatic defibrillator available at Trevor & Harriet Hamilton's residence 803 Ashpit Road, around the back side of Lake Rerewhakaaitu. Because this defibrillator is fully automatic no training is required simply turn on and place the pads on the patient, the device takes over.

This defibrillator is registered with St John. The Defibrillator is positioned at the front door under the porch and is in a non-coded box for quick access.



These machines can help to save lives and the St Johns statistics show why we need an AED:

1. Each year more than 2,000 New Zealanders will suffer a cardiac arrest outside of hospital
2. For 72% of cardiac arrests a bystander will perform CPR
3. People may show no warnings or prior symptoms and 12% survive to hospital discharge following a cardiac arrest
4. Use of an AED within 3-5 min of collapse can increase the chance of survival by up to 44%